

# ENCLOSURES

(FLUSH REAR PANEL MOUNT)

72x72x110

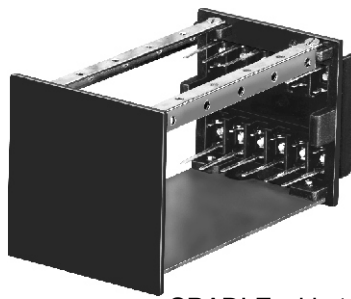
ISSUE - PIS/EF.72

DATE : 01.10.12

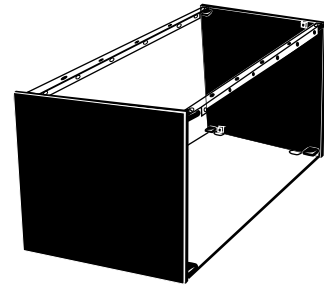
SERIES : EF.72



HOUSING

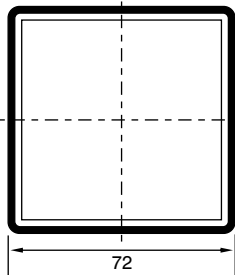


CRADLE with 12 Terminal

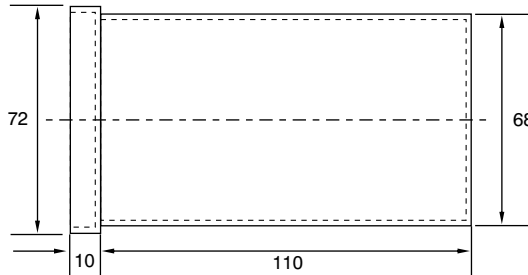


CRADLE with Plate

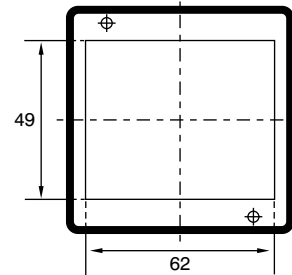
## HOUSING



FRONT VIEW



SIDE VIEW

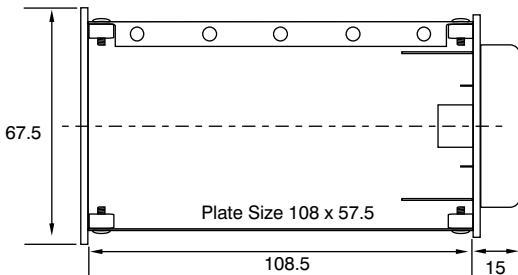


REAR VIEW

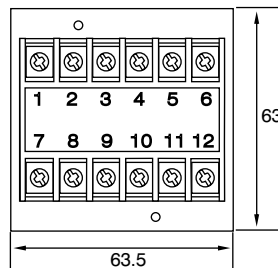
CRADLE with 12 Terminal

## CRADLE

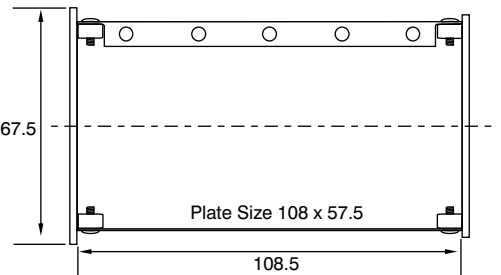
CRADLE with Plate



SIDE VIEW



REAR VIEW



SIDE VIEW

## ENCLOSURE CODE : EF.72-110

PEPL manufactures Enclosures to International Standards with Flush Rear Panel Mount complete with mounting clamps (screw type) & cradle having Zinc Passivated Base plate and two channels. These enclosure are moulded in ABS and are suitable for Temperature Controllers / Indicators, Digital timers / Counters and other Electronic / Electrical Instruments, Sub-Systems etc. The Enclosures can be offered with Front and Rear Terminal plate with 6x6 Terminal's or plain rear plate.

### MECHANICAL SPECIFICATIONS

SERIES	EF.72/110
HOUSING	72x72x110
CRADLE	109x49.5
MATERIAL	ABS
COLOUR	BLACK/GREY
WEIGHT WITH ACCESSORIES	195 gms
ACCESSORIES	MTG. CLAMP STUD

### ORDERING CODE

For Convenience in Ordering, Please Specify as Shown Below.

SERIES	SPECIFICATION	COLOUR
EF.72	11-110mm	B-BLACK, G-GREY

→ EF.72-11-B ←

Manufactured by:

**piri electrols pvt. ltd.**

A-28, Royal Industrial Estate, Naigaum Cross Road, Wadala, Mumbai 400031. INDIA.

☎ (022) 2412 8342/43 • Fax: (022) 2414 9077 • E-Mail : piriectrols@gmail.com • Website : www.pirielectrols.com

